

create your very own

WOODBURN CIRCLE

what you need:



+



+



+



=



tape

glue

xacto knife or scissors

printable paper

1

After printing out each sheet*, cut along the solid lines and fold along the dotted lines.

CUT ———
FOLD - - - -

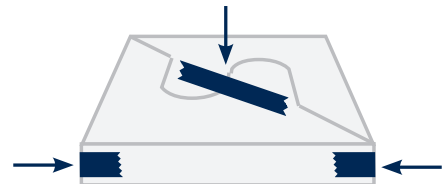
2

Construct the base by pulling the two tabs towards one another until they interlock.



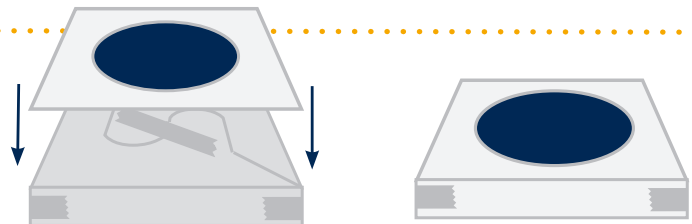
3

Place a piece of tape over the interlocking tabs to hold them together. Then tape the corner edges together to provide more support for your base.



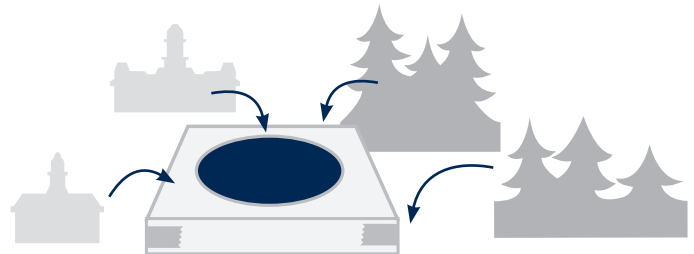
4

Once your base is finished, glue the square cutout onto the top of it in order to hide the tabs.

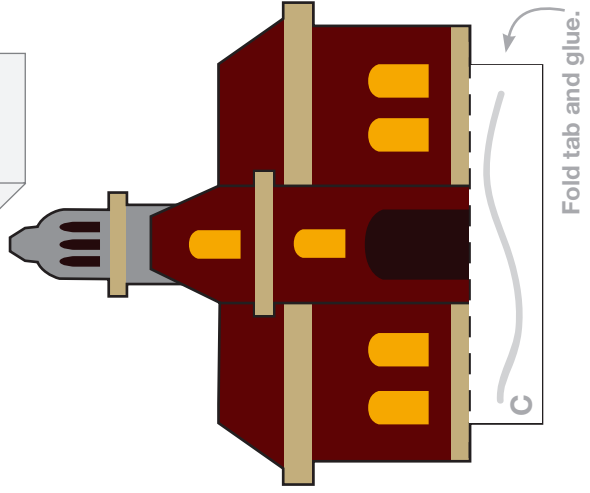
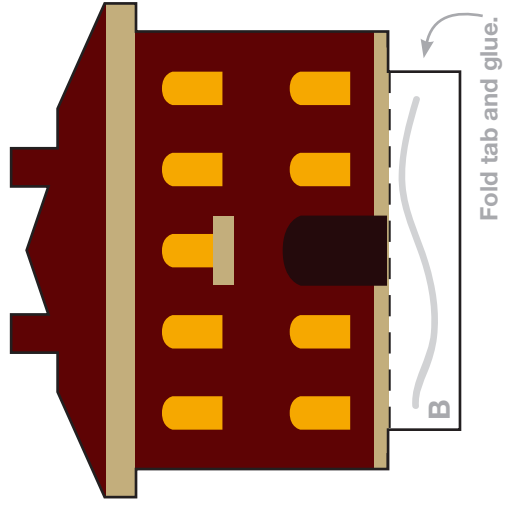
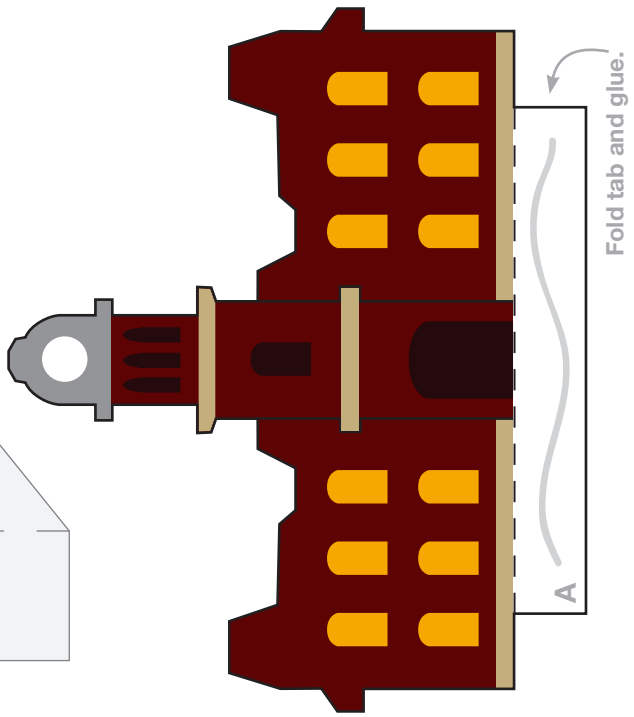
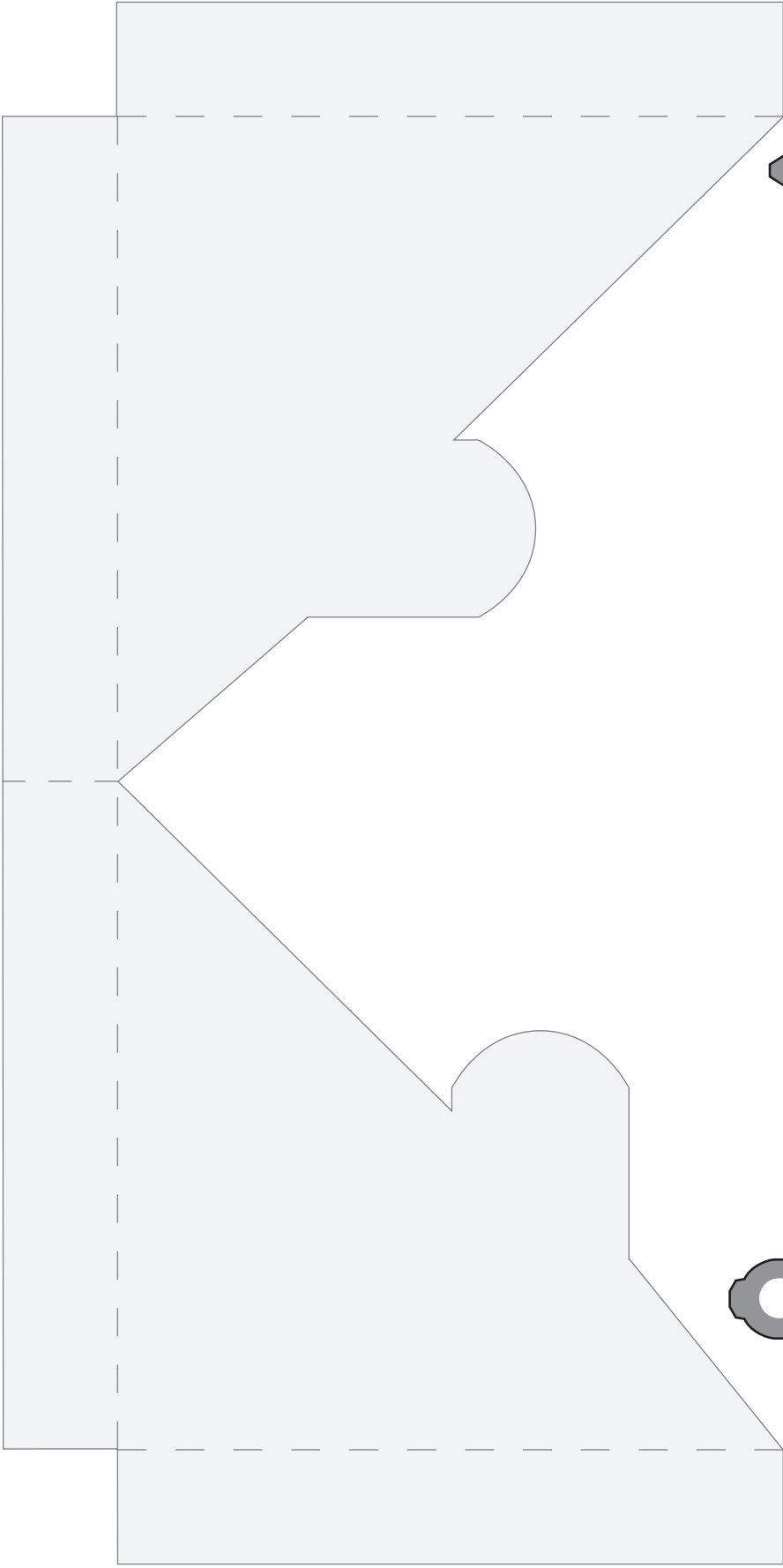


5

Now that your base structure is finished, you can finish by gluing the buildings and trees onto it.**



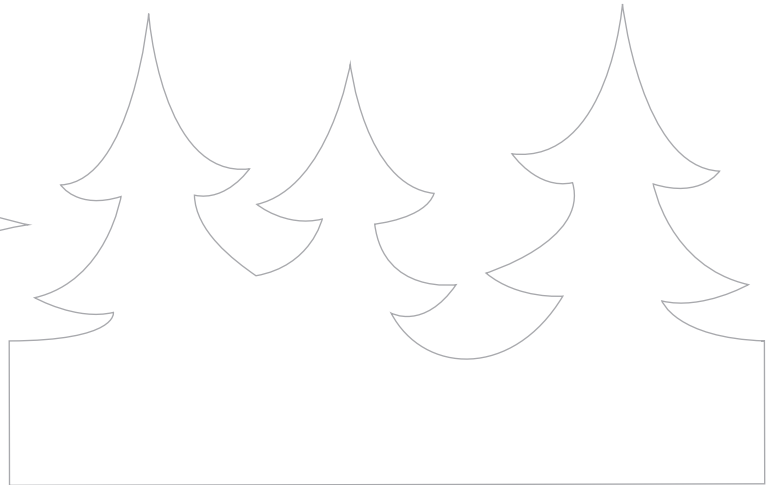
* Thicker paper, or cardstock, works best.
** Each cut-out is coded to help with placement.



Glue to SIDE of base.



Glue to BACK of base.



Glue to FRONT of base.



Glue to SIDE of base.